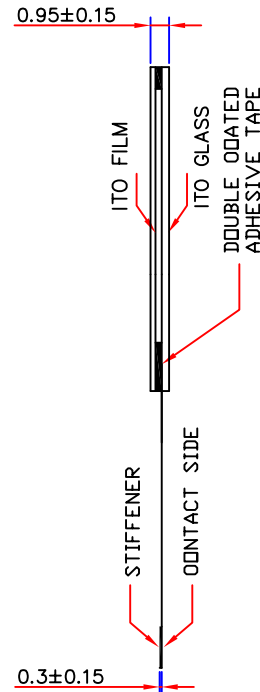
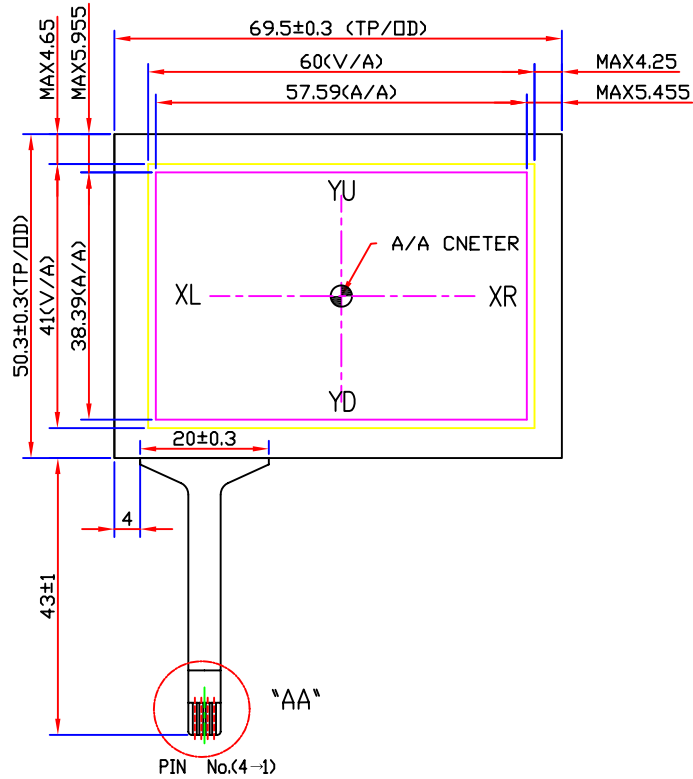


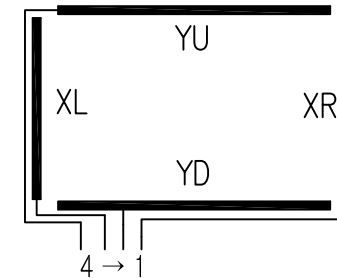
NOTE: The HantouchUSA Incoming Inspection Standard is part of this drawing. This quality and performance document can be viewed at: www.hantouchUSA.com, under Incoming Inspection Standards.



REMARK

- 1.Glass Thk: 0.7mm
- 2.Film Type: Non_Glare
- 3.Total Thk: 0.95±0.15mm
- 4.Linearity: ±1.8% or less
- 5.Transmittance: 80% or more
- 6.Resistance
200<FILM(Y)>900 ohm
200<GLASS(X)>900 ohm
- 7.Connector: FPC

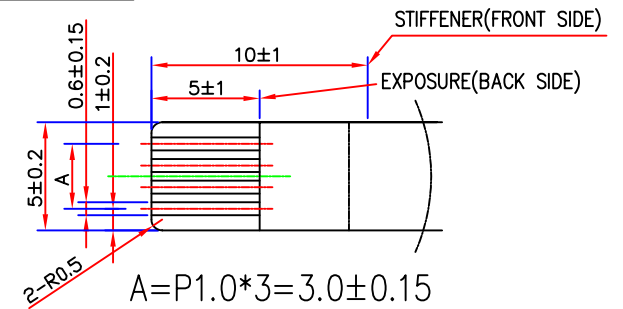
CIRCUIT DIAGRAM



SIGNAL ASSIGNMENT

Pin No	Signal
1	XR
2	YD
3	XL
4	YU

Detail "AA"



0	NEW DRAW	05.05.19	T.K.KONG		
REV.No.	REVISED	DATE	DRAWN	CHECKED	APPROVED

APPROVE		STD.TOL	UNIT	mm	DRAWING NO.	REV.
CHECK			SCALE	NONE	HT027A-NCIAG45	
DESIGN					DESCRIPTION	SHEET
DRAW	T.K.KONG				2.7 TOUCH PANEL	1/1