

PRELIMINARY

NOTE: The HantouchUSA Incoming Inspection Standard is part of this drawing. This quality and performance document can be viewed at: www.hantouchUSA.com, under Incoming Inspection Standards.

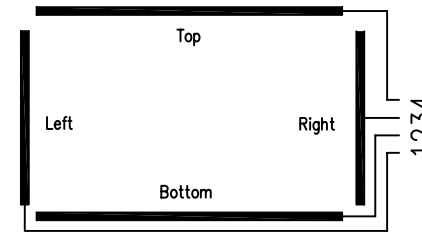
RoHS Compliant

REMARK

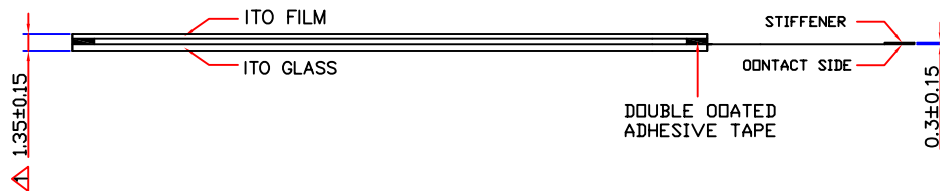
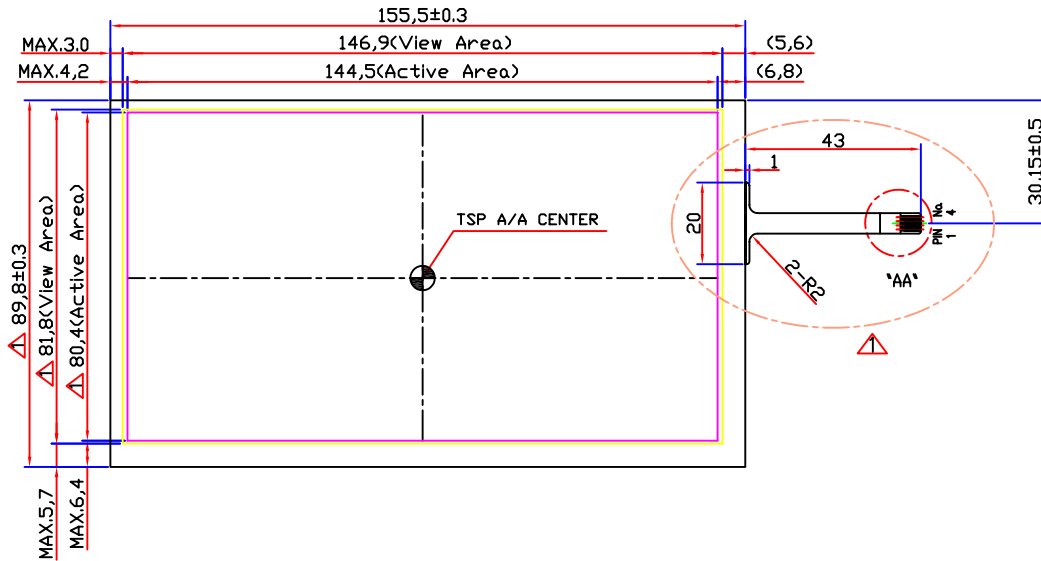
- △1. Glass Thk: 1.1mm
- 2. Film Type: Non-Glare
- △3. Total Thk: 1.35 ± 0.15 mm
- 4. Linearity: $\pm 1.8\%$ or less
- 5. Transmittance: 80% or more
- 6. Resistance
 - $100 < Y < 1200$ ohm
 - $100 < X < 1200$ ohm
- 7. Connector: FPC

CIRCUIT DIAGRAM

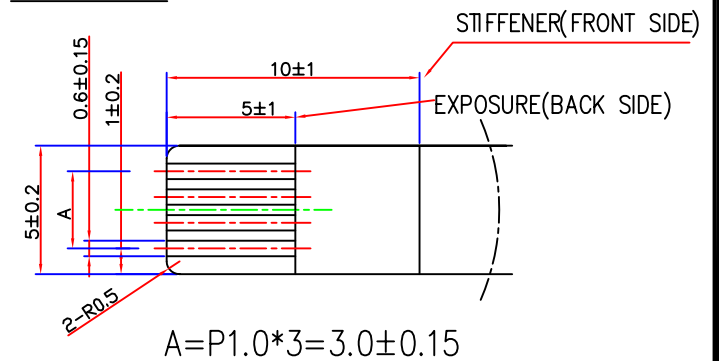
SIGNAL ASSIGNMENT



Pin No	Signal
1	Left
2	Bottom
3	Right
4	Top



Detail "AA"



APPROVE	STD.TOL	UNIT	mm	DRAWING NO.	REV.
CHECK	±0.3	SCALE	NONE	H8065A-NDOFH45	
DESIGN	HantouchUSA Touch Screen Specialists			DESCRIPTION	SHEET
DRAW				6.5" TOUCH PANEL	1/1

REV.No.	REVISED	DATE	DRAWN	CHECKED	APPROVED	DRAW
1	△ Dimension, Glass Thk, FPC Change	06.02.24	H.Y.IM			
0	NEW DRAW	06.01.12	K.B.KIM			