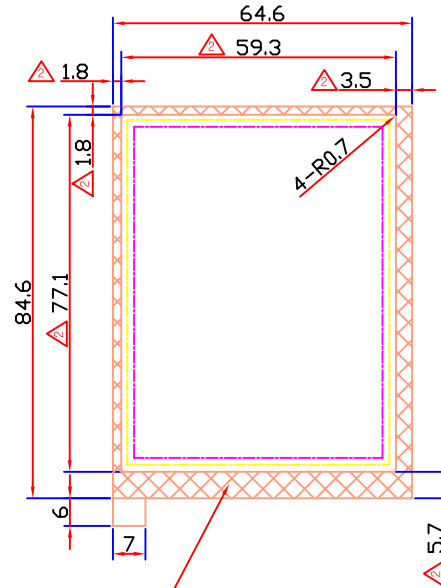
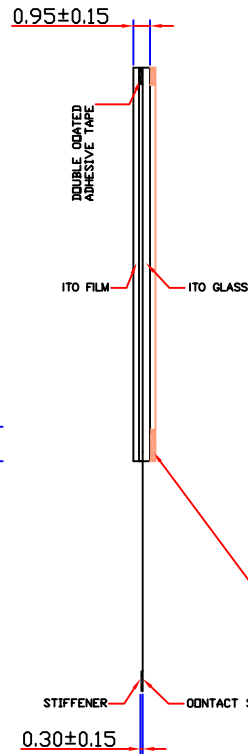
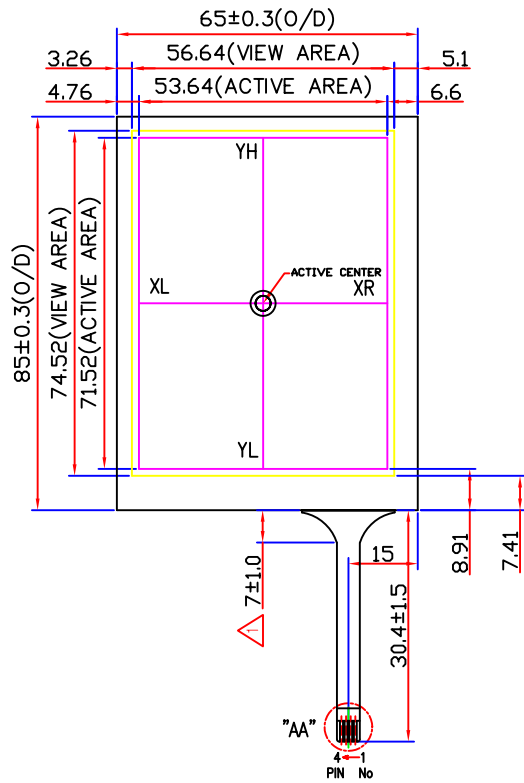


NOTE: The HantouchUSA Incoming Inspection Standard is part of this drawing.
 This quality and performance document can be viewed at:
www.hantouchUSA.com, under Incoming Inspection Standards.

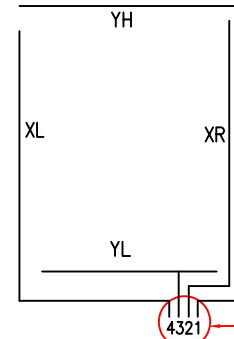
RoHS Compliant

REMARK

1. Glass Thk: 0.7mm(Normal glass)
- △ 2. Film Type: Clear
3. Total Thk: 0.95±0.15
4. Linearity: ±1.5 or less
5. Transmittance: 80% or more
6. Resistance
 200<Glass(Y)<900 ohm
 200<Film(X)<900 ohm
7. Connector: FPC
8. General Tolerance: ±0.3



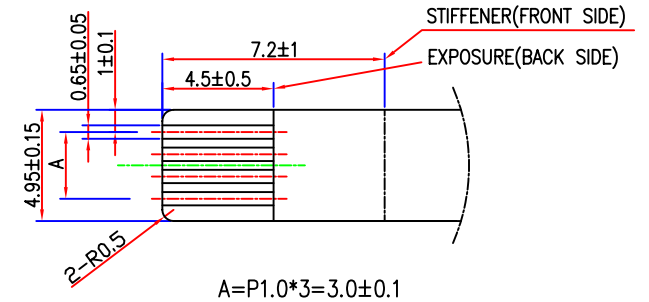
CIRCUIT DIAGRAM



SIGNAL ASSIGNMENT

Pin No	Signal
1	YH
2	XR
3	YL
4	XL

Detail "AA"



3	△ Film Type Change	06.04.26	H.Y. IM	K.B.KIM	J.W.AHN
2	△ PIN OUT	05.08.01	K.B.KIM		J.W.AHN
1	△ FPC	05.07.23	K.B.KIM		J.W.AHN
0	NEW DRAW	05.07.22	K.B.KIM		J.W.AHN
REV.No.	REVISED	DATE	DRAWN	CHECKED	APPROVED

APPROVE	UNIT	mm	PROJECTION	DRAWING NO.	REV.
CHECK	SCALE	NONE		H5035A-NCO0B32-R	3
DESIGN	 Touch Screen Specialists			DESCRIPTION	SHEET
DRAW				3.5 TOUCH PANEL	1/1