

NOTE: The HantouchUSA Incoming Inspection Standard is part of this drawing. This quality and performance document can be viewed at: www.hantouchUSA.com, under Incoming Inspection Standards.

RoHS Compliant

REV.NO.	REVISED	DATE	DRAWN	CHECKED	APPROVED
0	NEW DRAW	06.02.16	K.B.KIM		
1	FPC Position Change	06.03.04	H.Y.IM		

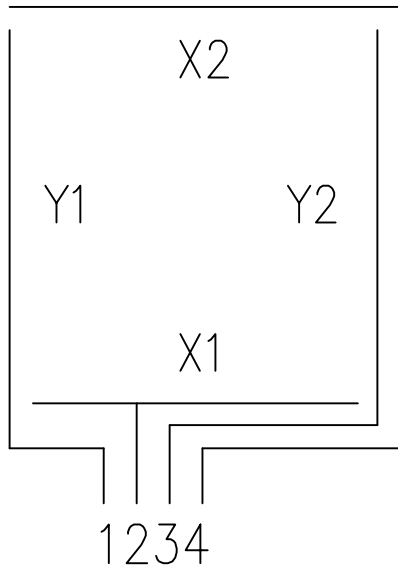
REMARK

1. Glass Thk: 1.8mm
2. Film Type: Non_Glare
3. Total Thk: 2.05 ± 0.15
4. Linearity: ± 1.5 or less
5. Transmittance: 80% or more
6. Resistance
 $200 < Y < 900$ ohm
 $200 < X < 900$ ohm
7. Connector: FPC

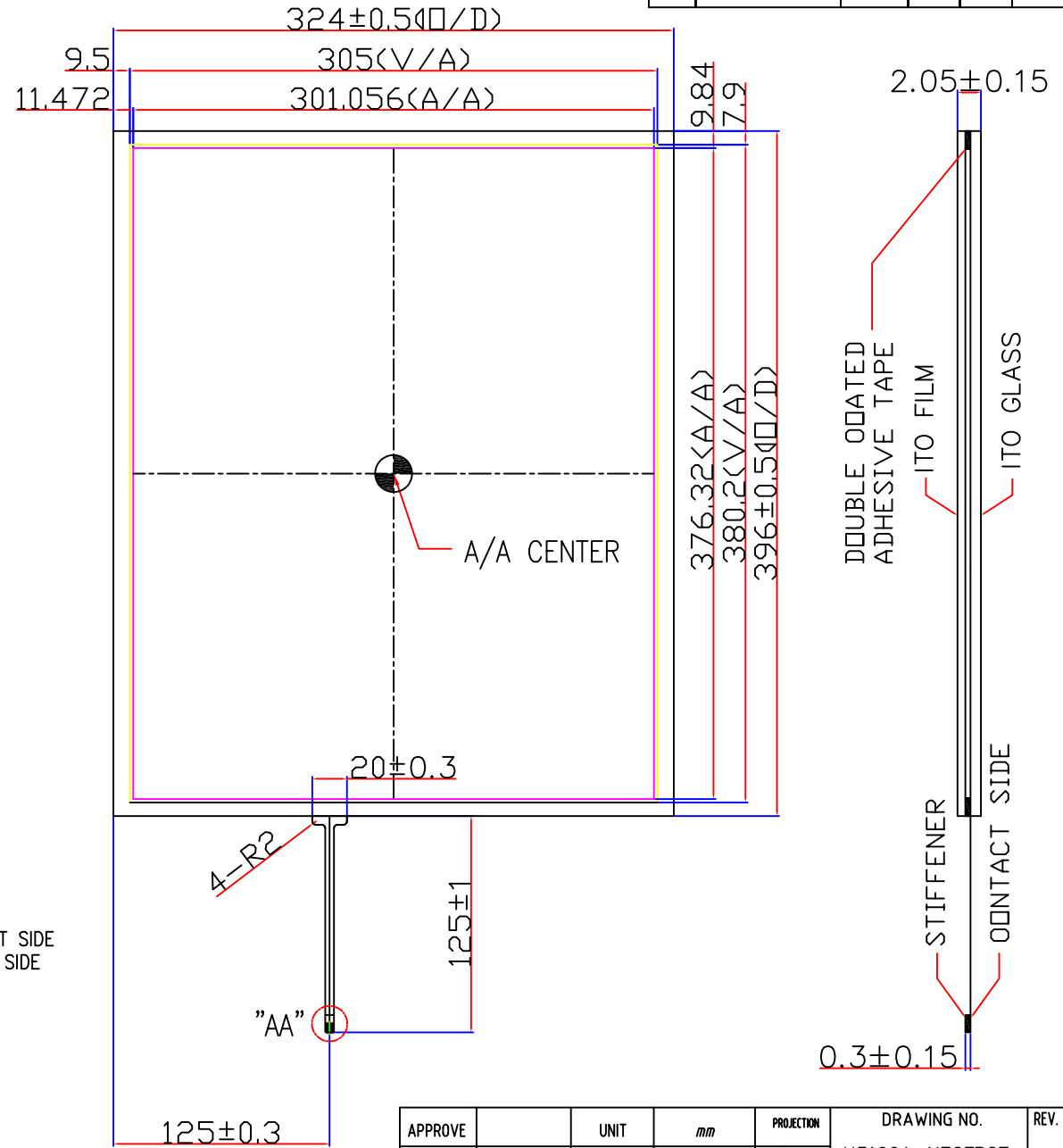
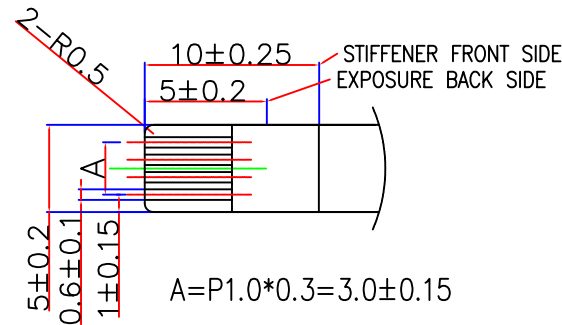
SIGNAL ASSIGNMENT

Pin No	Signal
1	Y1
2	X1
3	Y2
4	X2

CIRCUIT DIAGRAM



Detail "AA" (Scale=3/1)



Web-Site @ www.hantouchusa.com

APPROVE	UNIT	mm	PROJECTION	DRAWING NO.	REV.
	SCALE	NONE		H3190A-NEOFF27	
DESIGN	 Touch Screen Specialists			DESCRIPTION	SHEET
DRAW				19" TOUCH PANEL	1/1