

HANTOUCH USA HALOGEN FREE CONTROLLER

HT-EBU5-3U

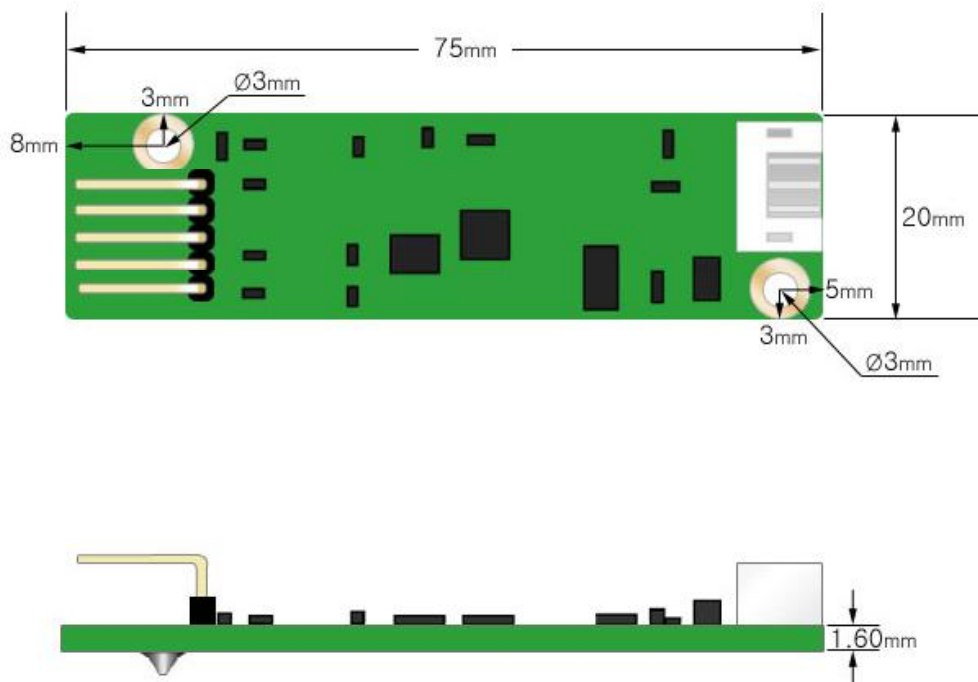
(5 - WIRE USB)

1. Features

Hantouch launched touch control board to meet latest Restriction of Hazardous Substances (RoHS) Directive. As HT-EBU5-3 improved models will be able to use ESD improvements the USB port.

This touch panel controller provides the optimistic performance of your analog resistive touch panels for 5-wire models. It communicates with PC system directly through USB connector. You can see how superior the design is in sensitivity, accuracy and friendly operation. The touch panel driver emulates mouse left and right button function and supports various operation systems.

- 5 wire resistive model
- Support utility Program
- Supports various operation systems
- Support USB Port



< Picture1 : Dimension >

2. OS Support

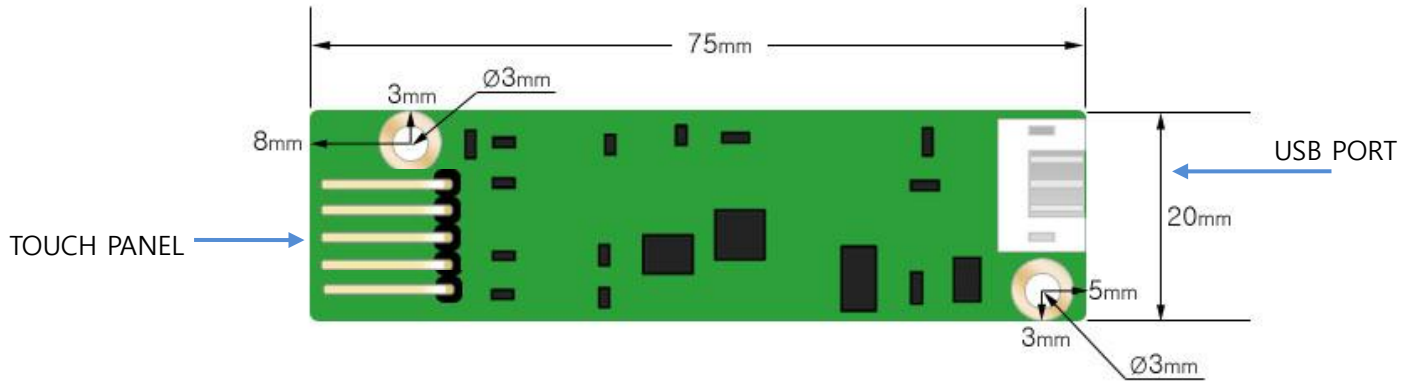
| OS | Version | Interfaces |
|----------------|--|-----------------------------|
| Windows | Windows Vista, XP/2000, 9x/ME Windows CE 2.12/3.0/.net/5.0/6.0 Windows Embedded Windows XP Tablet PC edition Windows Vista | USB |
| Linux | Mandrake (Mandrake 9.1/9.2/10, Mandriva 2005, Mandriva 2006), Red Hat (7.3/8.0/9.0), Fedora (Core I/II/III/IV/V/VI), Yellow Dog (3.X), SuSE (9.2/9.3/10/10.1), Ubuntu (5.1/6.06), Debian (3.1, Kernel 2.4.x/2.6.x) | USB (up to Kernel 2.6.x) |
| Mac | Mac OS, Mac OS X (IBM, intel CPU) | USB |

3. Specifications

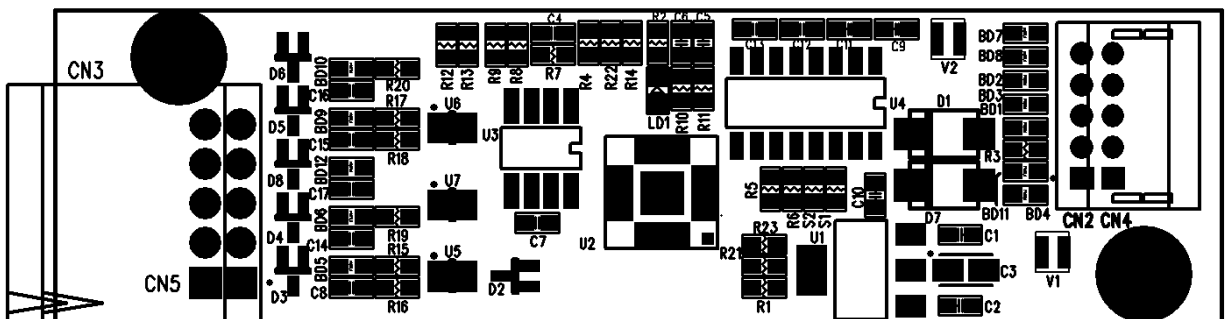
| <i>HT-EBU5-3U USB PORT (CN2)</i> | |
|---|---|
| Circuit Board Dimension | 20mm x 75mm (0.79inches x 2.95inches)----(5-Wire) |
| Power Requirements | D.C.+5V (80mA typical,50mV peak to peak maximum ripple and noise) |
| Operating Temperature | 0 to 50 °C |
| Storage Temperature | -40 to 80 °C |
| Relative Humidity | 95% at 60 °C |
| Interface | USB: 1.1 Low Speed, 2.0 Full Speed |
| Protocol | USB: 1.1 Low Speed, 2.0 Full Speed |
| Resolution | 2048x2048 resolution |
| Report rate | USB: Max. 250 points/sec |
| Response time | Max. 20 ms |
| Attached Cable | USB: 6' shielded cable with USB-A connector for USB |
| EMI | Unaffected by environmental EMI |
| Panel resistance | 5 wire resistive model: 200 ~ 900 ohm |
| MTBF | 200,000 hrs |

< Using USB Port >

4. Pin Assignment



< Picture2 : Port Position >



< Picture3 : Parts Layout >

4.1 USB PORT (CN2)

- Connector : YEONHO 20010WR-05 (2mm Pitch, 5pin, Angle)
- Pin Number :

| PIN | NAME | Description |
|-----|------|-------------|
| 1 | GND | USB GND |
| 2 | +5V | USB 5V |
| 3 | GND | USB GND |
| 4 | D+ | USB D+ |
| 5 | D- | USB D- |

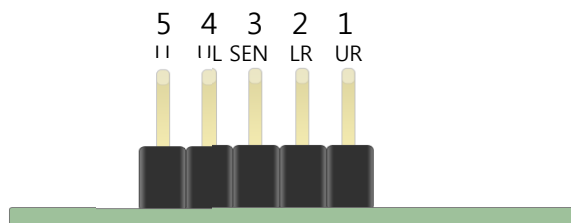
- Cable : USB A-YEONHO(20010HS) CABLE

| USB-A | Wiring Diagram | USB-B |
|---------|----------------|---------|
| 1 : +5V | | 1 : GND |
| 2 : D- | | 2 : +5V |
| 3 : D+ | | 3 : GND |
| 4 : GND | | 4 : D+ |
| | | 5 : D- |
| | | |

4.2 TOUCH PANEL PORT (CN3) – ELO TYPE

- Connector : Pin Header 2.54Pitch 5PIN, Angle
- Pin Number

| PIN | NAME | NAME |
|-----|--------|----------------|
| 1 | UR(RT) | TOUCH PANEL UR |
| 2 | LR(RB) | TOUCH PANEL LR |
| 3 | SENSE | SENSE |
| 4 | UL(LT) | TOUCH PANEL UL |
| 5 | LL(LB) | TOUCH PANEL LL |



4.3 3M TYPE PANEL CABLE

| PIN | ELO TYPE | NAME | 3M TYPE |
|-----|----------|------|---------|
| 1 | Y+ | | X+ |
| 2 | X- | | Y+ |
| 3 | SENSE | | SENSE |
| 4 | X+ | | X- |
| 5 | Y- | | Y- |

| | |
|-----------------|------------------|
| UL(Up Left) | UR(Up Right) |
| LT(Left Top) | RT(Right Top) |
| LL(Low eft) | LR(Low Right) |
| LB(Left Bottom) | RB(Riaht Bottom) |