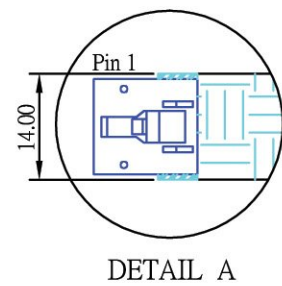
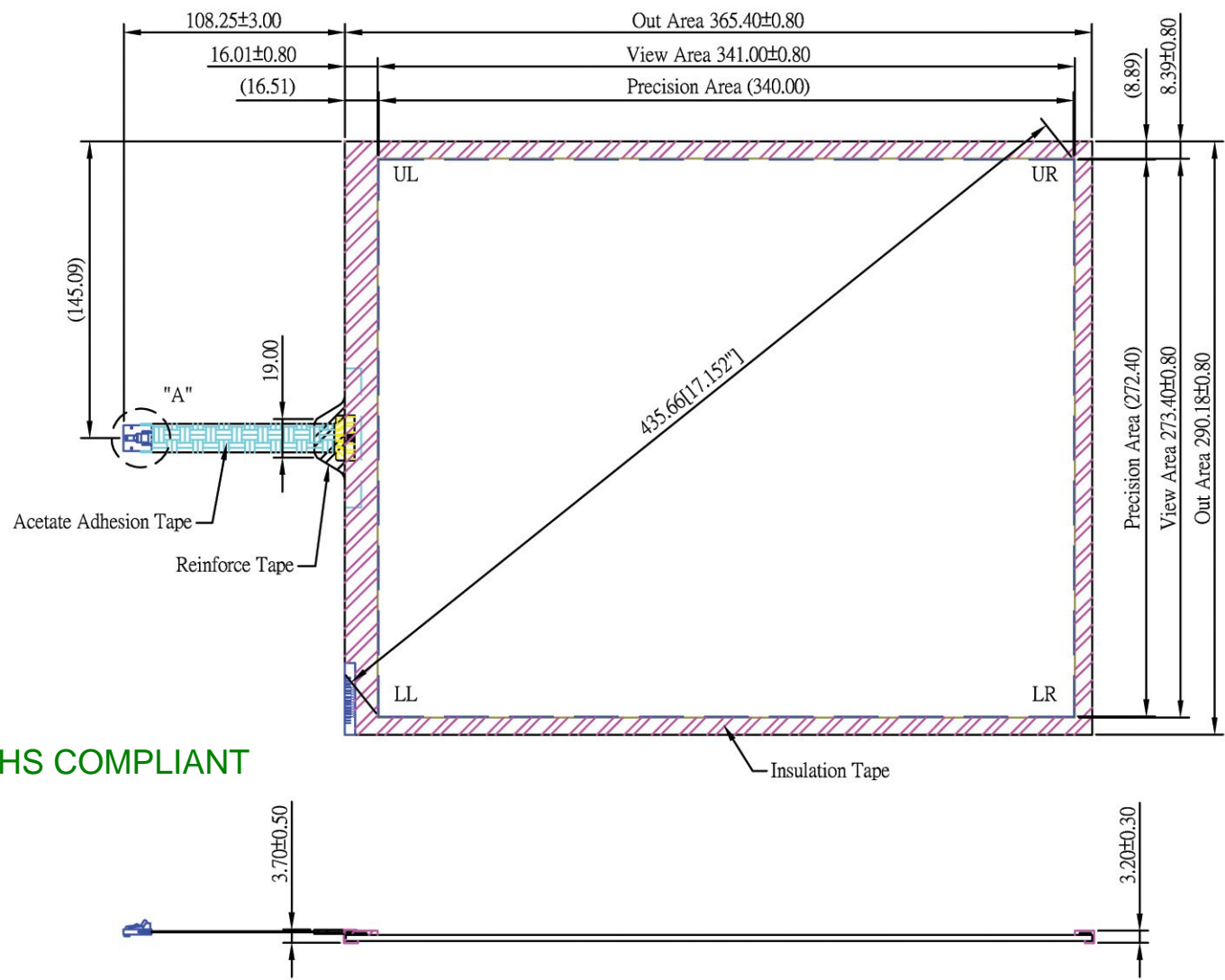


NOTE: The Hantouch USA incoming inspection standard is part of this drawing.
 This quality and performance document can be viewed at:
www.hantouchusa.com, under incoming inspection documents



Pin Out	
1	UR
2	UL
3	SHIELD
4	LL
5	LR

RoHS COMPLIANT

NOTES: 1. GLASS OPTICAL CHARACTERISTIC IS ANTI-GLARE 2. TOPSHEET GLASS THICKNESS 3.0mm 3. FLEXTAIL DO NOT BEND TO LESS THAN 3.175mm RADIUS 4. TAIL ACCEPTS 2.54mm PITCH 5. INSULATION TAPE : POLYESTER TAPE , TOTAL THICKNESS 0.063mm , BLACK 6. REINFORCE TAPE : POLYESTER TAPE , TOTAL THICKNESS 0.1mm , BLACK 7. ACETATE ADHESION TAPE : TOTAL THICKNESS 0.25mm , BLACK 8. 5 PIN AMP CONNECTOR, LATCH STYLE HOUSING P/N:487526-4 OR EQUIVALENT	THIRD ANGLE PROJECTION	Dimensions m/m	<h1>HANTOUCH USA</h1>
	Drawn by	Scale FREE	
	Checked by	Release Date 12,24'04	
		Drawing Number HT170C-ETCAB28	