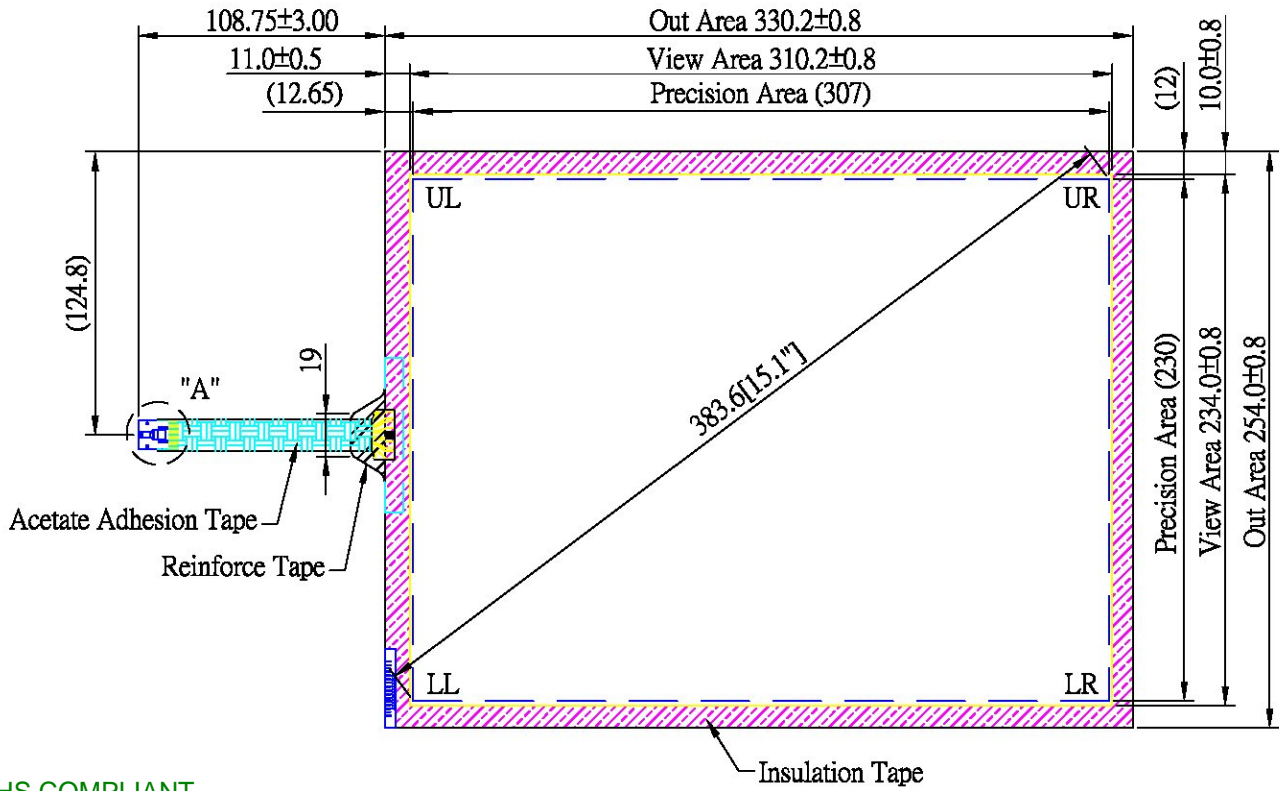
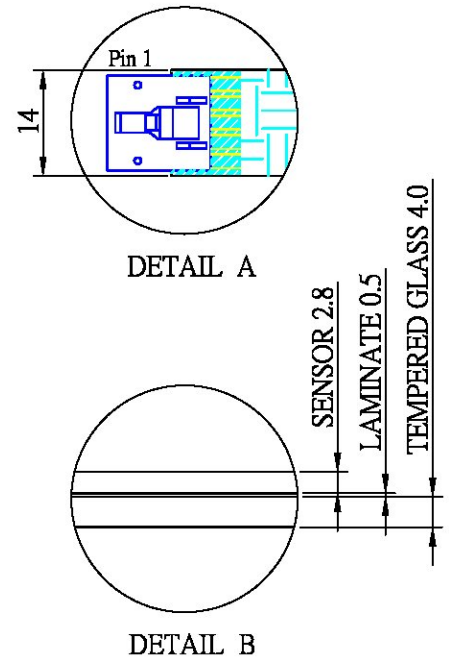


NOTE: The Hantouch USA incoming inspection standard is part of this drawing.
 This quality and performance document can be viewed at:
www.hantouchusa.com, under incoming inspection documents



RoHS COMPLIANT



Pin Out	
1	UR
2	UL
3	SHIELD
4	LL
5	LR

NOTES:

- GLASS OPTICAL CHARACTERISTIC IS CLEAR TYPE
- TOPSHEET GLASS THICKNESS 2.8mm
- FLEXTAIL DO NOT BEND TO LESS THAN 3.175mm RADIUS
- TAIL ACCEPTS 2.54mm PITCH
- INSULATION TAPE : POLYESTER TAPE , TOTAL THICKNESS 0.063mm , BLACK
- REINFORCE TAPE : POLYESTER TAPE , TOTAL THICKNESS 0.1mm , BLACK
- ACETATE ADHESION TAPE : TOTAL THICKNESS 0.25mm , BLACK
- 5 PIN AMP CONNECTOR, LATCH STYLE HOUSING P/N:487526-4 OR EQUIVALENT

THIRD ANGLE PROJECTION		Dimensions	m/m
Drawn by		Scale	FREE
Checked by		Release Date	10,13'04

HANTOUCH USA

Drawing Number HT151C-ETCAB74