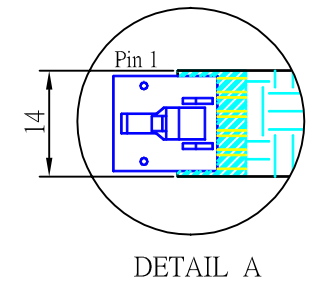
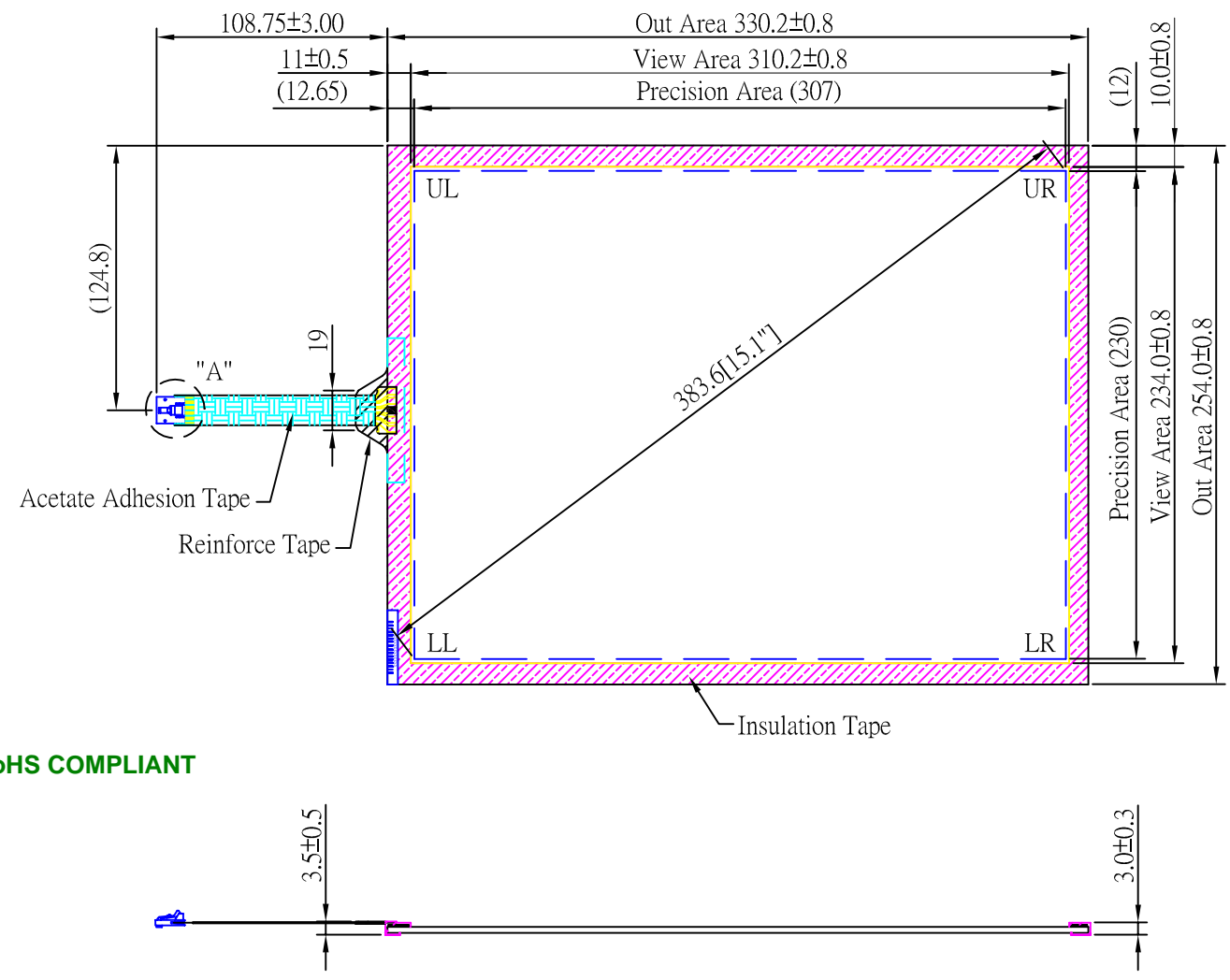


NOTE: The Hantouch USA incoming inspection standard is part of this drawing.
This quality and performance document can be viewed at:
www.hantouchusa.com, under incoming inspection documents



| Pin Out | |
|---------|--------|
| 1 | UR |
| 2 | UL |
| 3 | SHIELD |
| 4 | LL |
| 5 | LR |

RoHS COMPLIANT

- NOTES:**
- GLASS OPTICAL CHARACTERISTIC IS CLEAR TYPE
 - TOPSHEET GLASS THICKNESS 2.8mm
 - FLEXTAIL DO NOT BEND TO LESS THAN 3.175mm RADIUS
 - TAIL ACCEPTS 2.54mm PITCH
 - INSULATION TAPE : POLYESTER TAPE , TOTAL THICKNESS 0.063mm , BLACK
 - REINFORCE TAPE : POLYESTER TAPE , TOTAL THICKNESS 0.1mm , BLACK
 - ACETATE ADHESION TAPE : TOTAL THICKNESS 0.25mm , BLACK
 - 5 PIN AMP CONNECTOR, LATCH STYLE HOUSING P/N:487526-4 OR EQUIVALENT

| | |
|-----------------------------|--------------------------|
| THIRD ANGLE PROJECTION | Dimensions m/m |
| Drawn by J.H. LEE | Scale FREE |
| Checked by | Release Date 10,13'04 |

HANTOUCH USA

Drawing Number **HT151C-ETCAB28**